

Cynomolgus CD3E&CD3D/CD3 epsilon&CD3 delta Protein



Cat. No. CD3-CM201

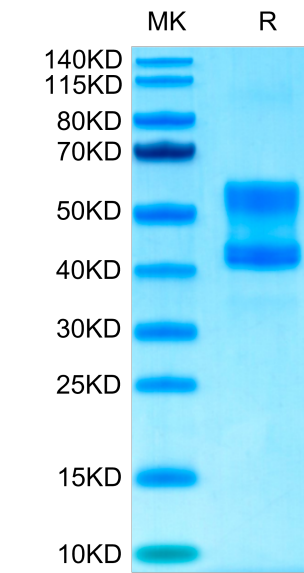
Description	
Source	Recombinant Cynomolgus CD3E&CD3D/CD3 epsilon&CD3 delta Protein is expressed from HEK293 with hFc tag at the C-Terminus of CD3E and CD3D. It contains Gln22-Asp117 (CD3E) and Phe22-Ala105 (CD3D).
Accession	Q95LI5.2 (CD3E)&Q95LI8 (CD3D)
Molecular Weight	The protein has a predicted MW of 36.9 kDa (CD3E) and 35.4 kDa (CD3D). Due to glycosylation,the protein migrates to 58-62 kDa (CD3E) and 44-46 kDa (CD3D) based on Bis-Tris PAGE result.
Endotoxin	Less than 1 EU per µg by the LAL method.
Purity	> 95% as determined by Bis-Tris PAGE > 95% as determined by HPLC

Formulation and Storage	
Formulation	Lyophilized from 0.22 µm filtered solution in PBS (pH 7.4). Normally 8% trehalose is added as protectant before lyophilization.
Reconstitution	Dissolve the lyophilized protein in distilled water. Please refer to the Certificate of Analysis for detailed instructions.
Storage	-20 to -80°C for 12 months as supplied from date of receipt.-80°C for 3 months after reconstitution.Recommend to aliquot the protein into smaller quantities for optimal storage. Please minimize freeze-thaw cycles.

Background	
T-cell surface glycoprotein CD3 epsilon&CD3 delta chain, also known as CD3E&CD3D, are single-pass type I membrane proteins. When antigen presenting cells (APCs) activate T-cell receptor (TCR), TCR-mediated signals are transmitted across the cell membrane by the CD3 chains CD3D, CD3E, CD3G and CD3Z. All CD3 chains contain immunoreceptor tyrosine-based activation motifs (ITAMs) in their cytoplasmic domain.	

Assay Data

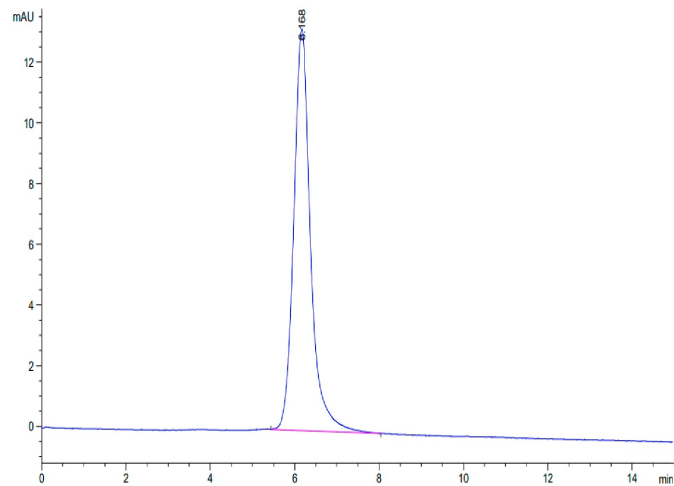
Bis-Tris PAGE



Cynomolgus CD3E&CD3D on Bis-Tris PAGE under reduced conditions. The purity is greater than 95%.

SEC-HPLC

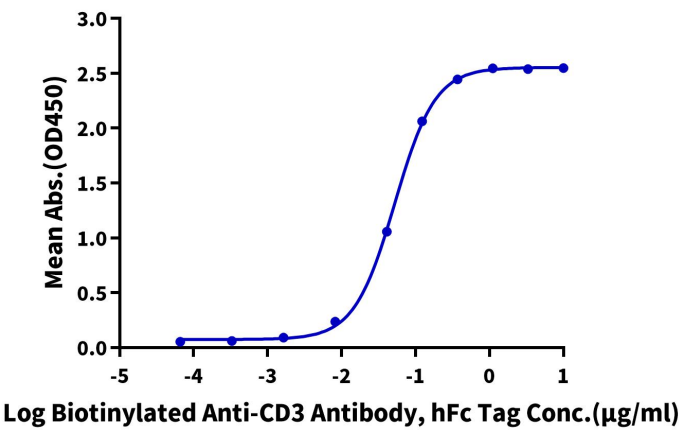
Assay Data



The purity of Cynomolgus CD3E&CD3D was greater than 95% as determined by SEC-HPLC.

ELISA Data

Cynomolgus CD3E&CD3D, hFc Tag ELISA
0.05µg Cynomolgus CD3E&CD3D, hFc Tag Per Well



Immobilized Cynomolgus CD3E&CD3D, hFc Tag at 0.5 µg/ml (100 µl/Well). Dose response curve for Biotinylated Anti-CD3E&CD3D Antibody, hFc Tag with EC50 of 52.6 ng/ml determined by ELISA.